

TOTAL CONNECT BOX - for Self monitoring

Total Connect 2.0E



Managing the Domonial system over the Internet

GKP-S8M



Portable LED Keypad with TAG reader, and siren (112,5 x 175,5 x 25 mm)

TAG-G / TAG-I / TAG4



TAG grey, ivory ou four colours kit (red, blue, yellow, black) (47 x 30 x 3mm)

TCPA1B / TCPA2B



Panic Alert keyfob (39 x 14mm - Ø x h)

TCE800M



Two-way Keyfob (57 x 31.75 x 12.7 mm)

TCC8M



Two-way Keyfob with system status (56 x 48 x 9mm)

Control

Detection / Image

CAMIR-F1



- PIR with built in still camera
- Picture on event and/or on demand
- Pet immune (up to 36kg)
- Colour images
- White LED for images in total darkness
- Detection range : 11m x 12m
- Up to four years battery life
- 55 x 121 x 64mm

DT8M / DTPI8M



- DUAL TEC[®] motion sensor
- pet tolerance (DTPI8M) or DT8M with dedicated lens
- 15m x 18m
- up to four years battery life
- 125 x 75 x 52mm

IR8M / IRPI8M



- PIR / Pet immune PIR
- Up to four years battery life
- 112 x 60 x 40mm

DO8M / DODT8M



- Door contact
- Up to five years battery life
- External input (DODT8M)
- 102 x 22 x 23mm (DO8M)
- 112 x 60 x 40mm (DODT8M)

SHK8M / SHKC8M



- Shock sensor
- Shock only (SHK8M) or shock with door contact (SHKC8M)
- Up to five years battery life
- 90 x 40.6 x 30mm

FG8M



- Glassbreak
- Up to six/seven years battery life
- 108 x 80 x 43mm

DF8M / DFS8M



- Smoke sensor with sounder
- DF8M: 5 years battery life (LI03V)
- DFS8M: Sealed Lithium battery, powered for life (10 years)
- Ø135 x 58mm (DF8M)
- Ø120 x 45mm (DFS8M)

CO8M



- Carbon Monoxide Detector with sounder
- 120mm x 105mm x 45mm
- Sealed Lithium battery, powered for life

DET8M

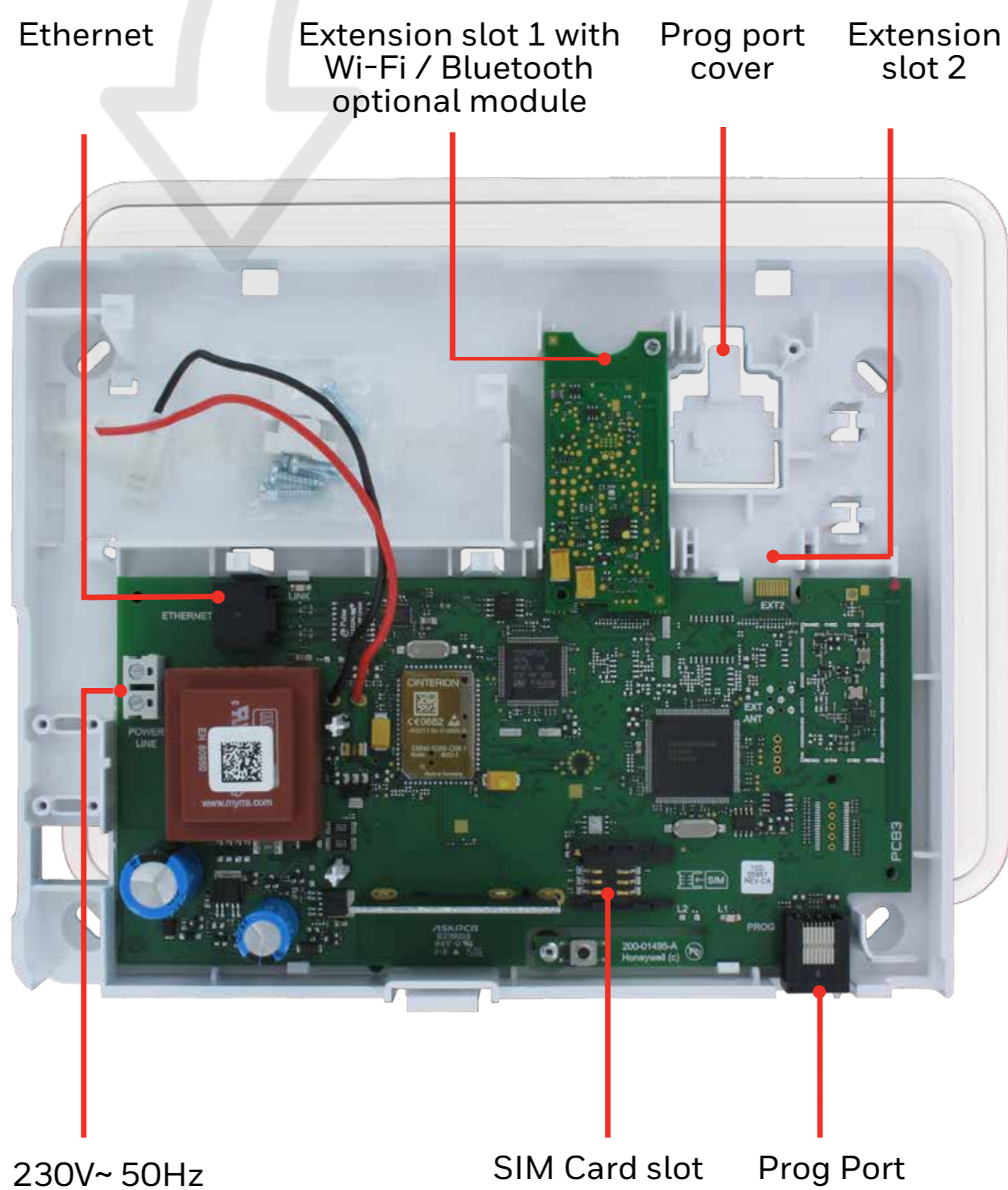


- Flood Detector and Temperature Sensor
- NC input can be used for intruder alarm
- 90 x 40.6 x 30mm

Panel

HMI8EU-STD8EG

Total Connect Box Panel (246 x 191 x 55 mm)



Alerting

SI800M



Indoor siren (Ø165 x 70mm)

SEF8M



External siren with strobe light (240 x 330 x 73mm)

GKP-S8M

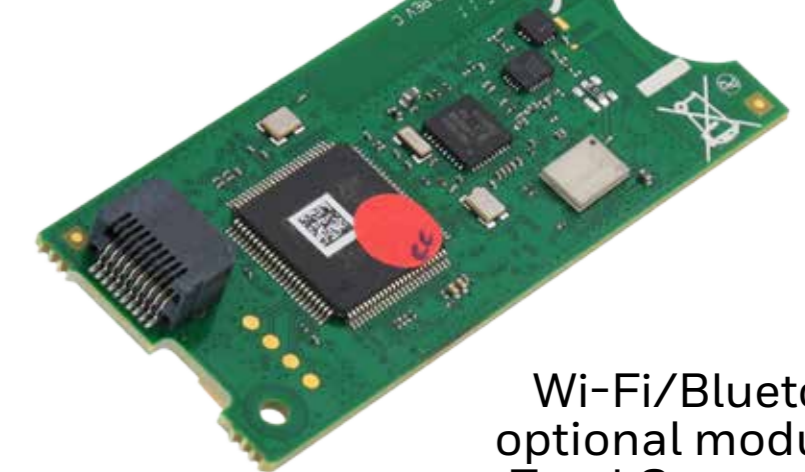


Keypad with built-in siren

Connecting

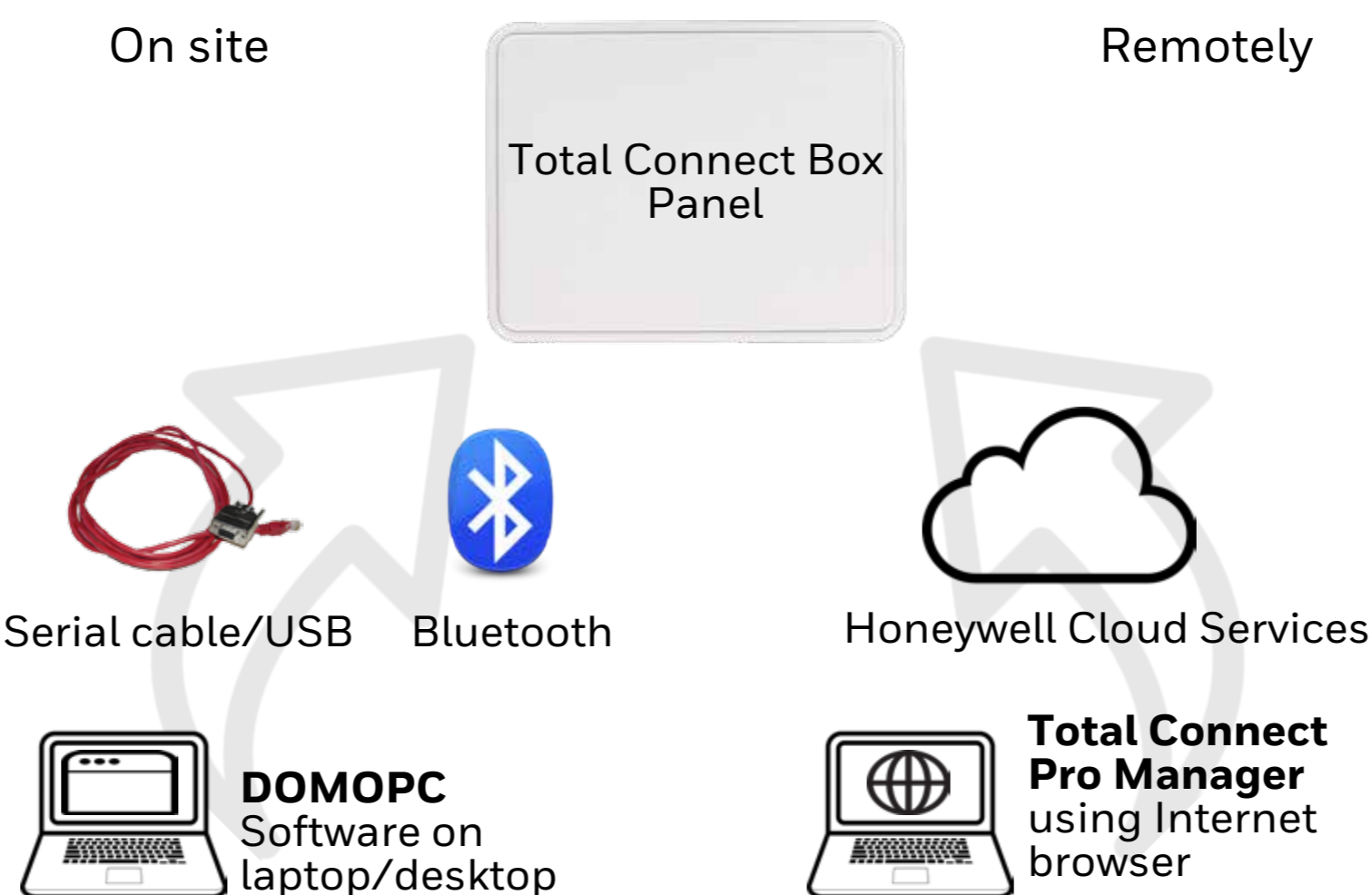
- Built-in GSM / GPRS
- Built-in Ethernet / IP
- Wi-Fi/Bluetooth optional module

DBCH-WB



Wi-Fi/Bluetooth optional module for Total Connect Box

Programming



Part Numbers	Software	Serial cable	Serial/USB adaptor	Web services
DOMOPC-LT	✓	✓	✓	
CAB800PC		✓	✓	
Total Connect Pro Manager				✓

Home automation

SMPG-UK / SMPG-EU



- Smartplug for home automation
- Can be controlled by keypads, keyfobs or over the Internet with Honeywell Total Connect 2.0E
- Up to 8 devices
- On/Off up to 3600W
- Power consumption indication on Honeywell Total Connect 2.0E
- 2 versions: UK or EU plug
- 115 x 64 x 64 mm